

Moor to discover...

Okehampton has long been the gateway to Dartmoor's breathtaking beauty, and there are many wonderful walks to be enjoyed from the town.

Below shows where some of the easier walks can be found.

And while Dartmoor can be accessed from the town for gentle strolls and relaxation, if you are planning to seriously explore the Moor, ensure you are **properly equipped** with essential walking gear and maps.



- 1** **Ball Hill - Fatherford - Simmons Park.** Follows part of the Tarka Trail through lovely woodland, crossing the beautiful East Okement river via a bridge next to the stone railway viaduct and returning to town via Tramlines Wood.
- 2** **Old Park.** A network of paths to explore through ancient woodland by the West Okement river with views of the Castle.
- 3** **The Granite Way.** A shared foot and cycle path following the line of the railway to Meldon and beyond.

The Ball Hill walk is easy and well signposted. For more detailed information on other walks from the town visit the Tourist Information Centre at the Museum of Dartmoor Life.

When enjoying Dartmoor and Okehampton's parks please observe the Countryside Code:

- Enjoy the countryside and respect its life and work
- Guard against all risk of fire
- Keep dogs under close control and pick up after them and **TAKE YOUR POO BAGS HOME!**
- Keep to public paths across farmland
- Use, gates and stiles to cross fences, hedges and walls
- Leave livestock, crops and machinery alone
- **TAKE ALL LITTER HOME**
- Help to keep all water clean
- Protect wildlife, plants and trees

OKEHAMPTON TOWN MAP

Additional parking and toilet facilities

- 1** TOWN HALL
- 2** MUSEUM OF DARTMOOR LIFE and TOURIST INFORMATION



Our historic town has excellent facilities and a fantastic range of **independent shops** as well as supermarkets and lots of places to grab a great coffee and a bite to eat.

Find out more at visitokehampton.co.uk



Okehampton
Town Council

okehampton.gov.uk

Okehampton town map courtesy of Everything Okehampton.
Leaflet, Simmons Park and FairPlace Sensory maps designed by GCGD, Okehampton
guycracknell.co.uk

Discover Okehampton's natural heart



Immerse yourself in the town's green spaces and gardens

SIMMONS Park

and

FAIRPLACE sensory GARDEN



SIGHT



SOUND



SMELL



TOUCH



Okehampton
Town Council

FAIRPLACE sensory GARDEN

The sensory garden was created as a reflectionary area where people can have an all-round sensory experience. It's an inclusive area for people with dementia and disabilities to access and enjoy strong smelling plants, bright flowers and a variety of scented leaves and rough grasses to touch.



Can you see any butterflies?



Trees, flowers and plants are beautiful. Take a photo or make a drawing of your favourite.

There are lots of flowers in the garden. How many can you count? What colours can you see?



Fairplace Toilets

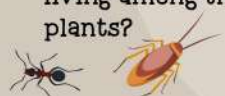
ST JAMES' STREET

GEORGE STREET

Close your eyes and listen. Can you hear the breeze through the leaves of the Silver Birch trees

Does the Cycle Network sign remind you of an animal's tail, diving into the garden? What sort of animal?

How many different insects can you spot living among the plants?



Stroke the Lamb's Ear. Are they fluffy like real lambs?

Sit on a bench. Take time to simply enjoy the space.

How many different shades of green can you see?

Reach through the railings and touch the plants gently.

Can you see bees and hoverflies pollinating the plants as they collect nectar?



Map not to scale and illustrations are for guidance only. Planting plan accurate at the time of printing (2021) and actual plants and flowers may differ from those shown, or not be flowering due to seasonal changes.

To Town Centre



SIMMONS Park

OKEHAMPTON

MAKING CHOICES - there are lots of ways into the park. Which will you choose today?

There is a WORLD WAR II pill box in the park - can you find it?

IMAGINE. Find the doorway in the Holly Tree. Step through. Where does it lead..?



How many bird houses can you find in the park?

Can you hear the crows, rooks and jackdaws? Can you see their nests that they use each spring?



LISTEN - hear the sound of the bridge when you stamp on it. Does it make a different noise when you jump up and down on it?



EXPLORE THE PATHS.

Go up the steps into the woods. Follow the River Loop or Main path into the heart of the park.

Simmons Park is a very special place. It was opened in July 1907 by the Mayor of London, Lord Treloar, and named after Sydney Simmons, a local benefactor, who generously gifted the park to the town.

In June 2002, the park was entered in the Register of Parks and Gardens of Special Historic Interest in England to safeguard its park status and protect it from ever being built on. In July 2007 Simmons Park was twinned with Friary Park in Friern Barnet, London. A new play area was installed in 2005 on the site where the old swimming pool used to be. In 2012 Simmons Park gained a Queen Elizabeth II Fields in Trust award and in 2020 the park was voted Much Loved status by Fields in Trust.



CAR PARK

BOWLING CLUB

LEISURE CENTRE



TODDLERS' PLAY AREA

STOP AND THINK. Find a bench - there are plenty around the park - and pause for a minute or longer.

OPEN SPACE - the park has a huge area of grass with space for everyone.

FIELD OF DREAMS - lie back on the grass. The large open space in the park means you can see a vast area of sky above. On a clear day, lose yourself in the endless blue, or, if there are clouds, drift away as they float overhead...



LIGHT AND SHADE - as you wander through the woods see how the light changes. When it's warm, feel the coolness of the air under the green canopy...



RELAX - try woodland bathing in the trees. Fill yourself with the sounds and smells. Feel the earth and the bark of the trees.

ECHO - make your own performance in the Band Stand. Can you hear your voice echoing? Sing your favourite song, conduct your own band, shout loud, fill it with sound.

PUTTING GREEN

HEAR - how does the East Okement River sound today? Flowing from high on Dartmoor, its mood changes depending on the weather. Is it gently babbling or is it loudly roaring?



SEE AND DO - find the Weeping Willow and play hide and seek under its branches. Look in the ponds for wildlife. Marvel at the giant gunnera plants. (Always take care near water).



Give a tree a hug. There are 100s in the park of all shapes, sizes and textures. What's your favourite?



SIGHT SMOOTH path - all access

Gravel / dirt paths - limited access.

steep sections - see the map at the Park entrance

Step-free path to Station Road

Uneven steps

Picnic tables

Shelters



TOUCH



SMELL



Please use the bins or TAKE LITTER HOME

OCRA PAVILION

PLAY - Simmons Park has a brilliant Play Area. Swings, slides, climbing frames and lots more to try. There's even exercise equipment.

The Toddlers' Area is enclosed, and dog-free. There are plenty of benches and picnic tables.

Have fun and **PLAY SAFE.**

Play Pooch
Sticks on one of the bridges.

PLATTIS MEADOW is one of the wilder areas in the park. Find the wooden signs at the far end and feel the carved shapes without looking. Can you guess what they are?

To Okehampton Railway Station, Tramlines, Fatherford Woods and Dartmoor. Signposted.